


Readout Card - All Sheets
RC_INTERFACES.SCHDOC;RC_FPGA1.SCHDOC;RC_FPGA2.SCHDOC;RC_FPGA3.SCHDOC;RC_ANALOGUE.SCHDOC

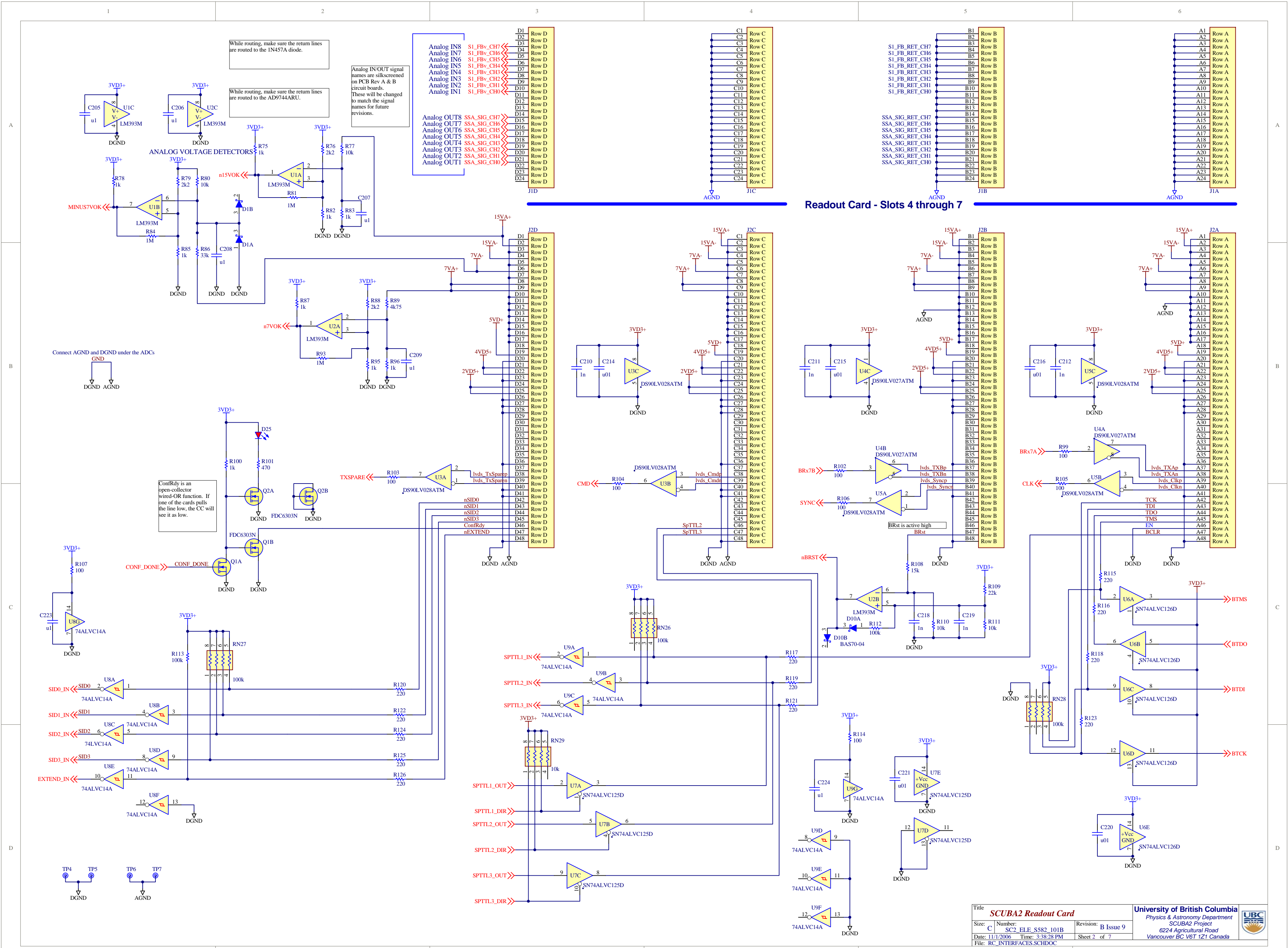


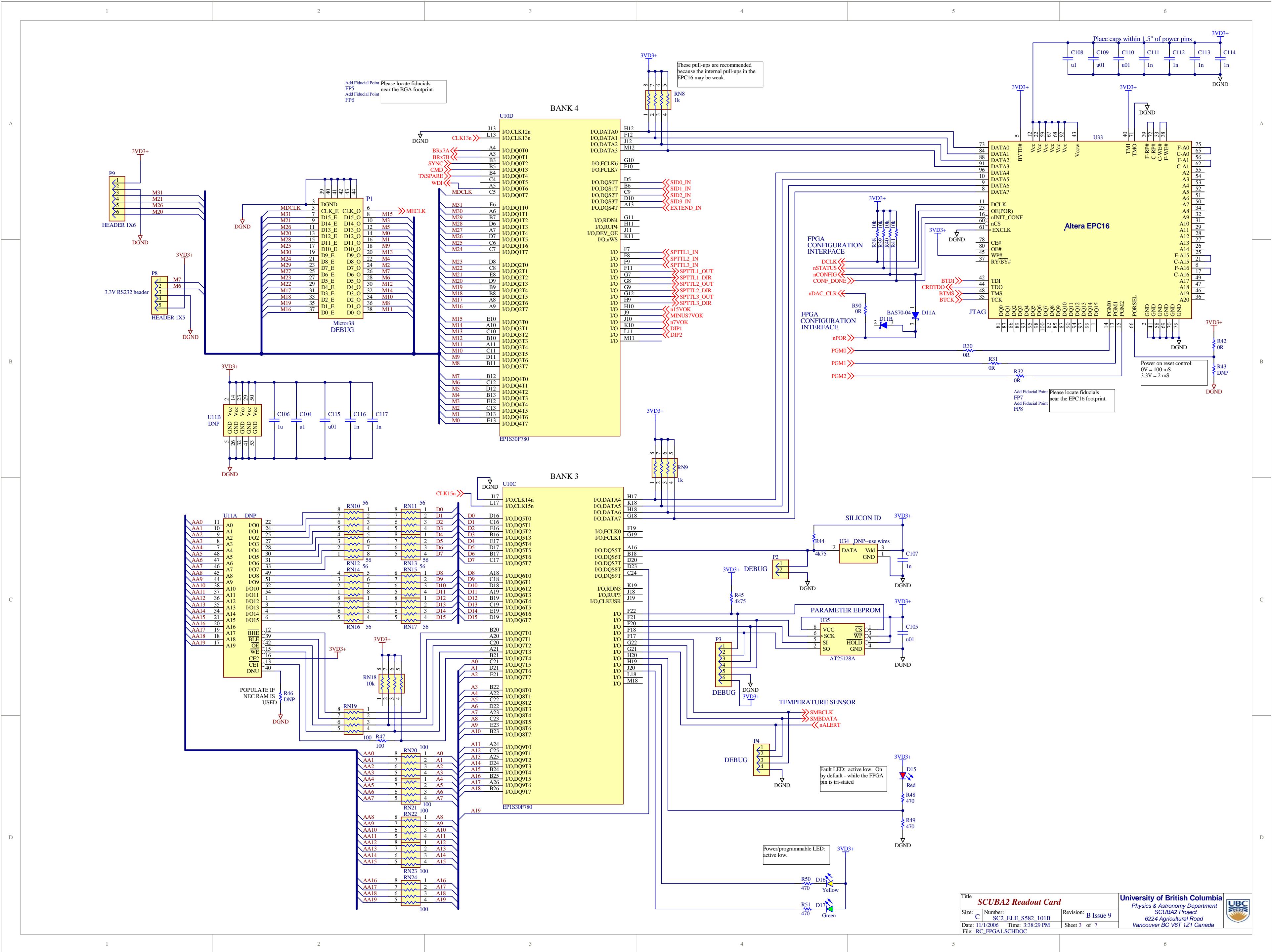
Use UBC Logo
Use UBC Logo

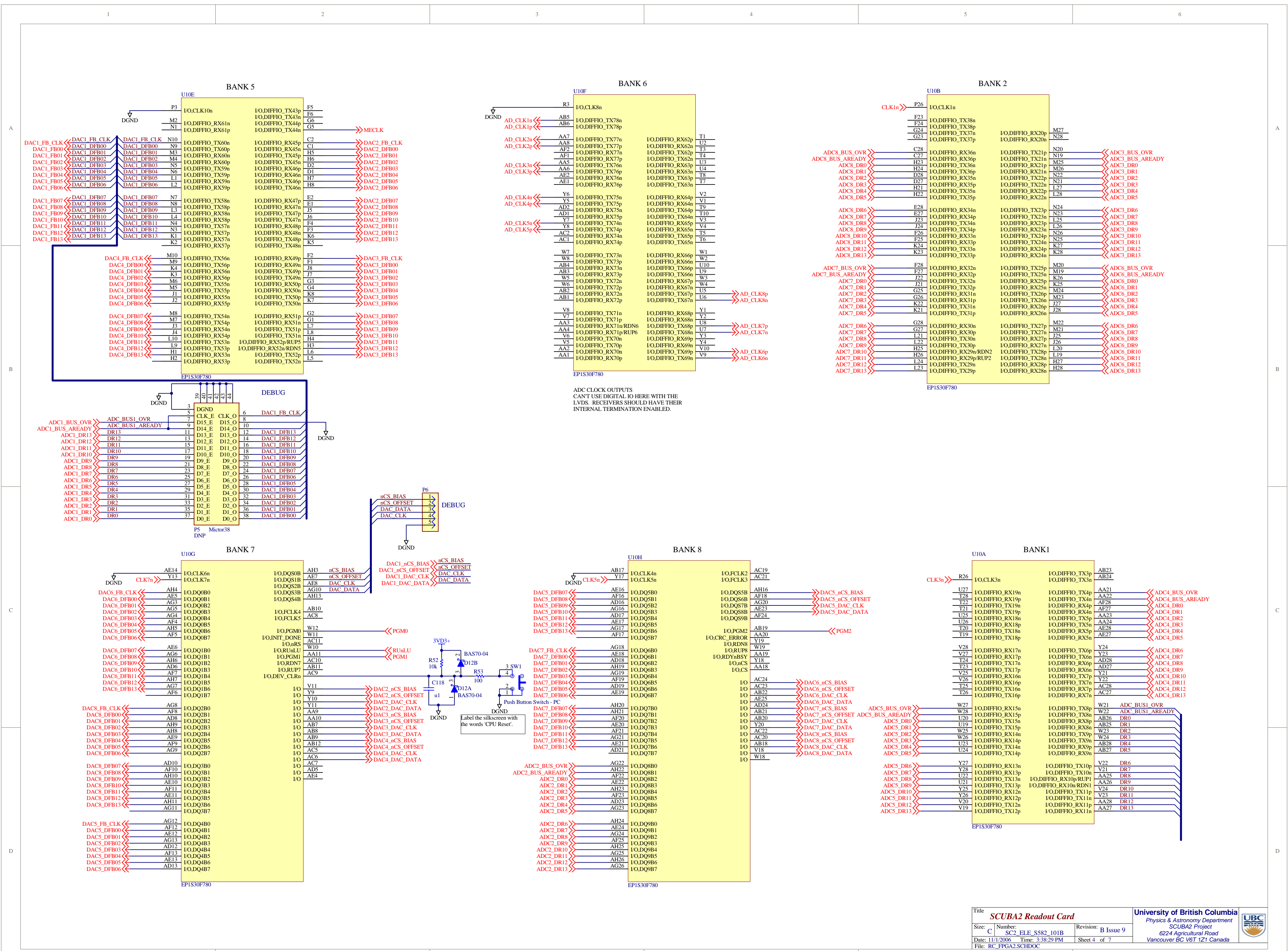
Add Fiducial Point
FP1
Add Fiducial Point
FP2
Add Fiducial Point
FP3
Add Fiducial Point
FP4

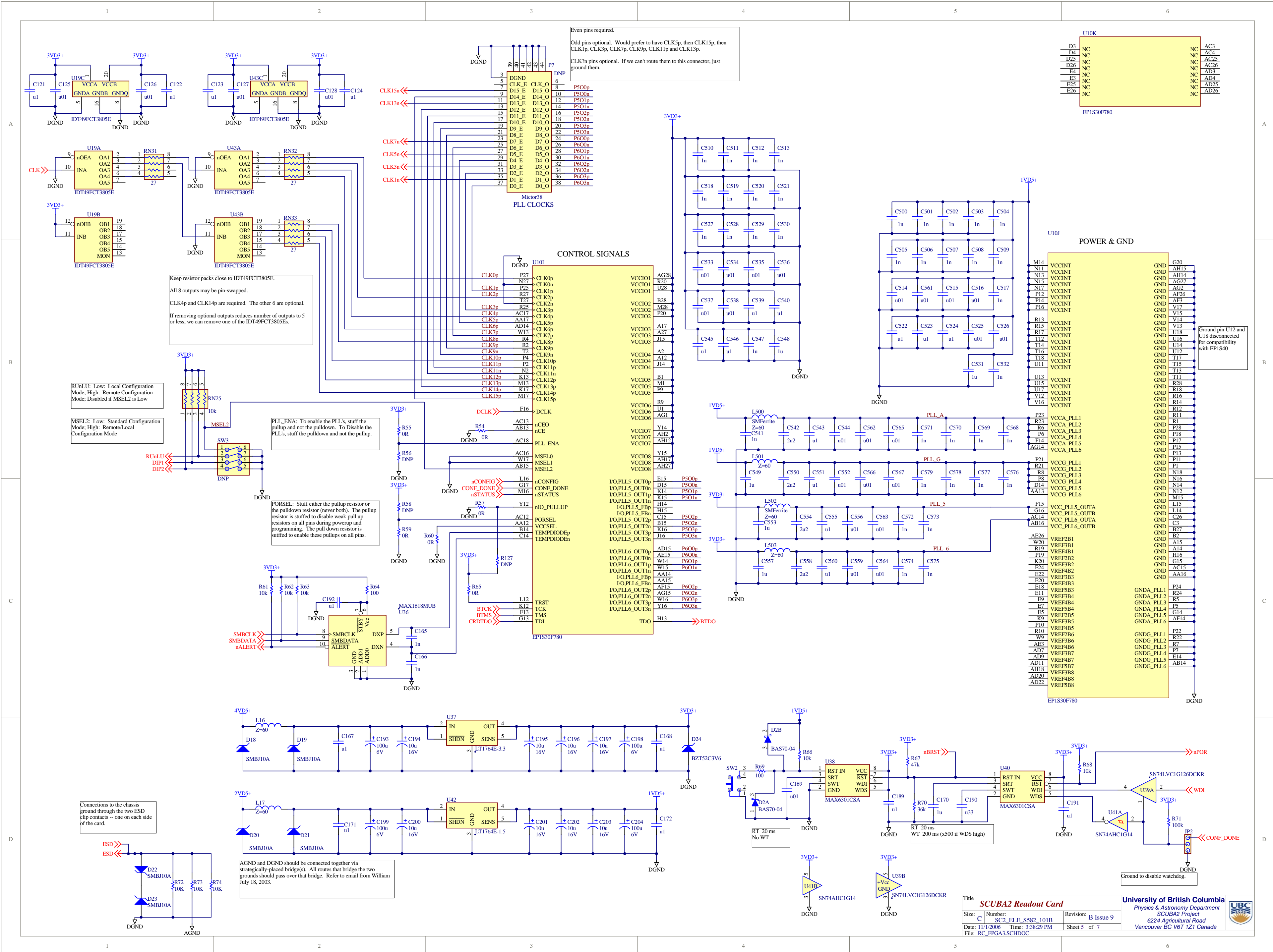
Global fiducials should be located in the four corners of the PCB board.
Fiducials should be at least 3mm from the edge of the board.

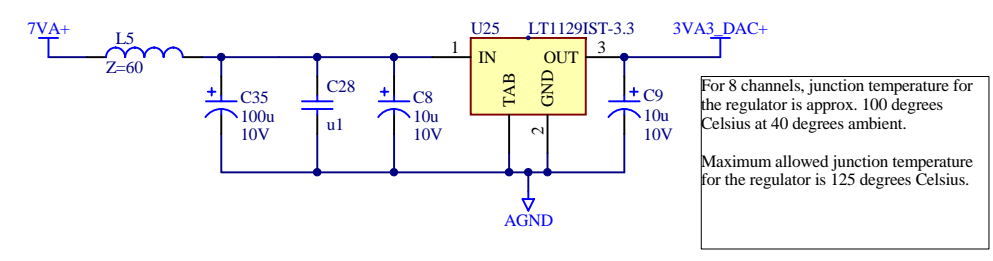
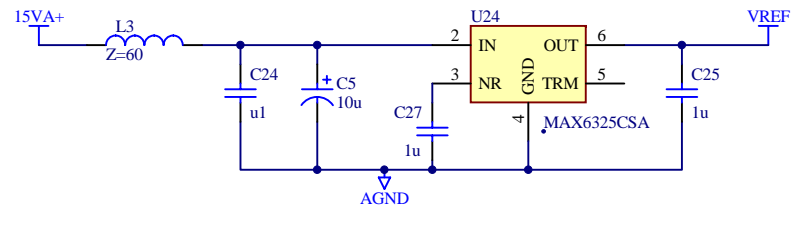
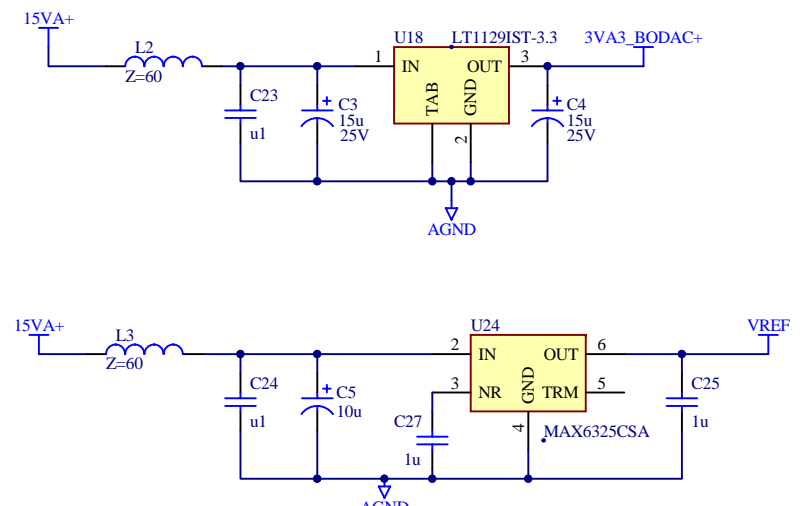
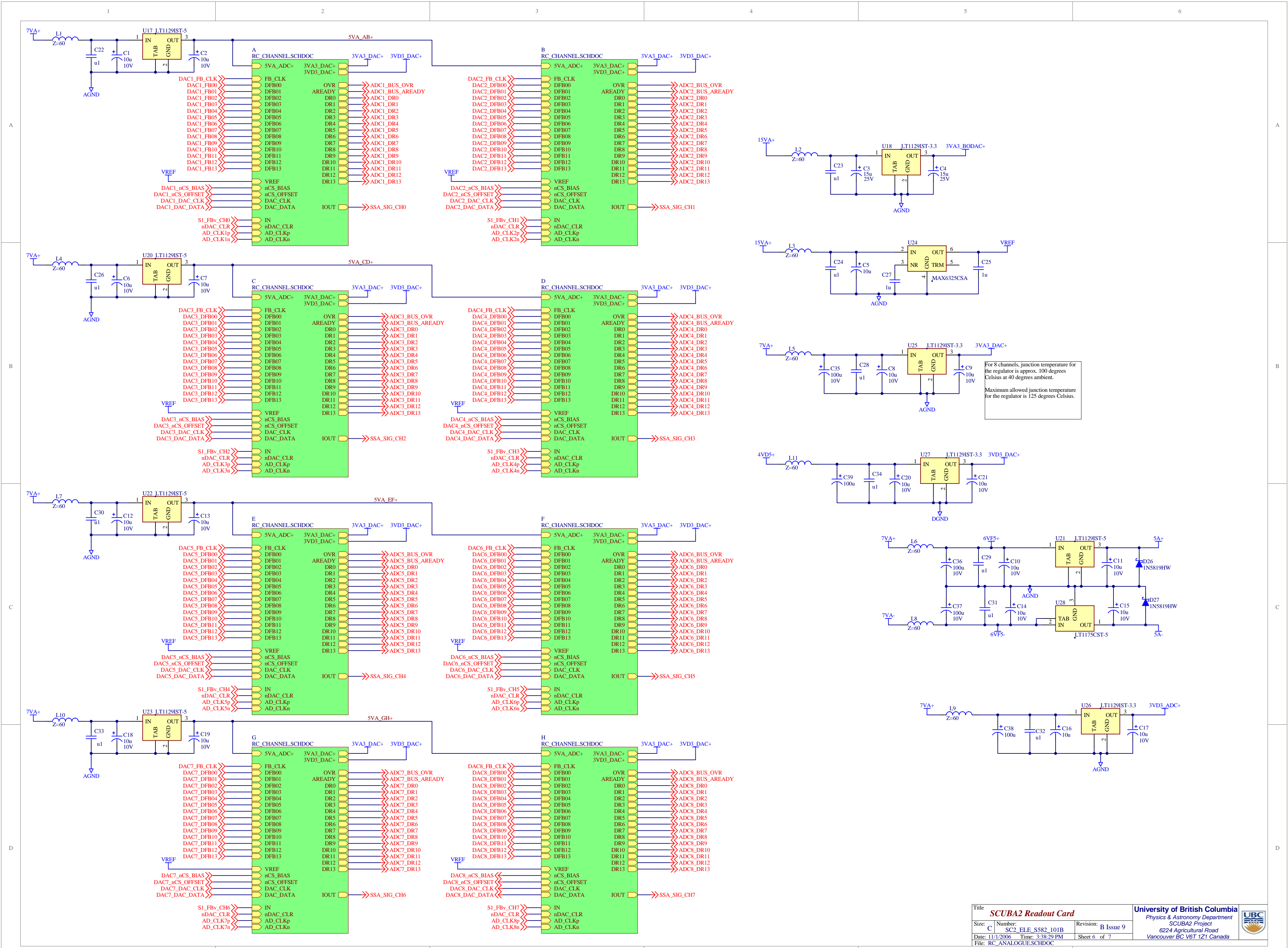
Title		SCUBA2 Readout Card		University of British Columbia	
Size:	C	Number:	SC2_ELE_S582_101B	Revision:	B Issue 9
Date:	11/1/2006	Time:	3:38:28 PM	Sheet	1 of 7
File:	RC_MASTER SHEET.SCHDOC				
				Physics & Astronomy Department Scuba2 6224 Agricultural Road Vancouver BC V6T 1Z1 Canada	
					



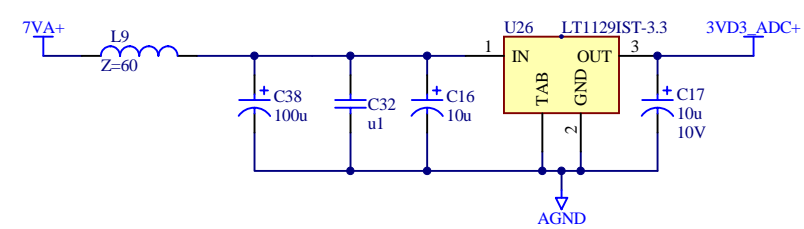
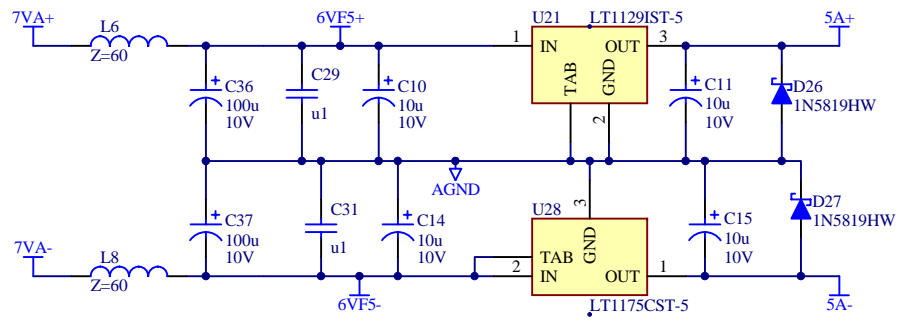
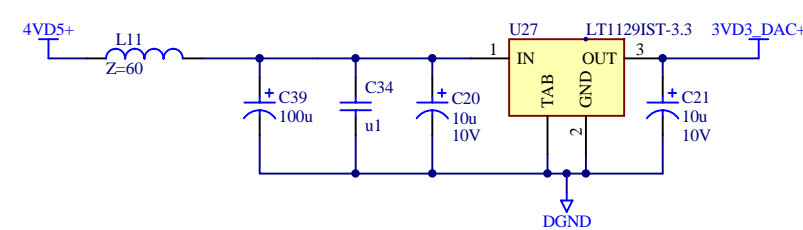


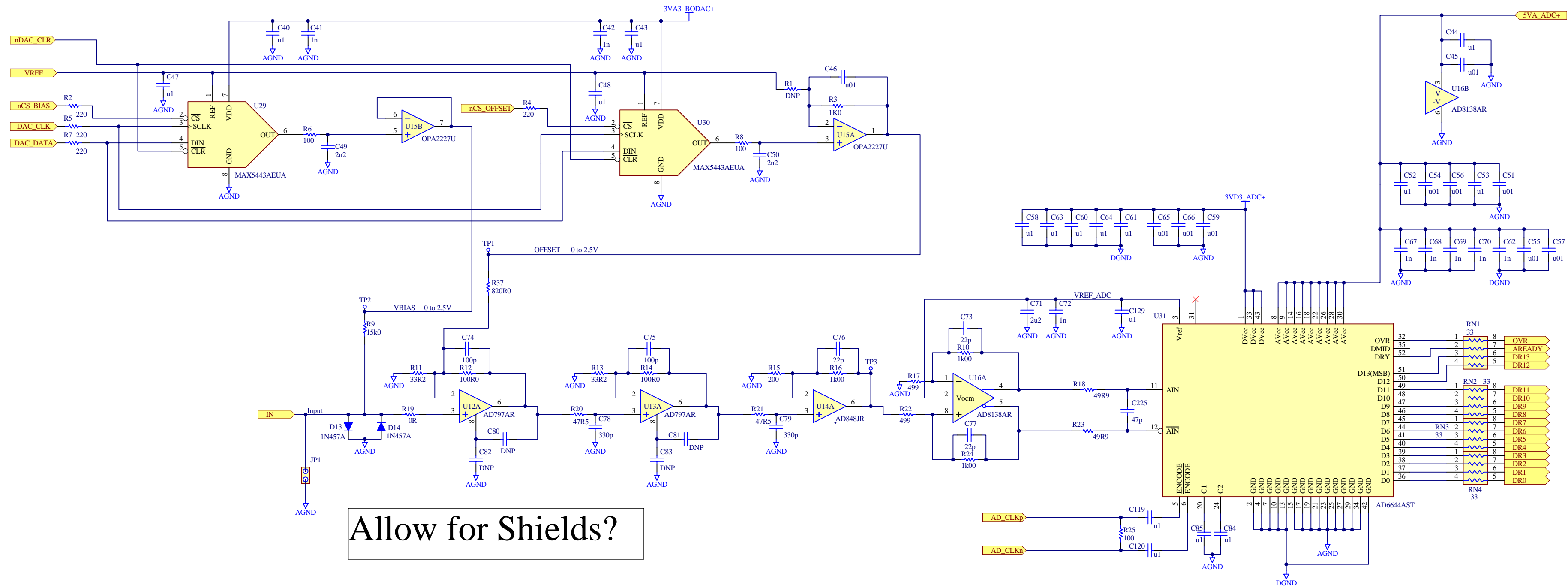






For 8 channels, junction temperature for the regulator is approx. 100 degrees Celsius at 40 degrees ambient. Maximum allowed junction temperature for the regulator is 125 degrees Celsius.





Allow for Shields?

